

*O Marvell
A garden amidst the flames.
My heart has become capable
of every form: it is a pasture
for gazelles and a convent for
Christian monks, and
a temple for idols and the
pilgrim's Ka'ba, and the tables
of the Torah and the book
of the Quran.
I follow the religion of Love:
whatever way Love's camels
take, that is my religion
and my faith.*

Muhyiddin Ibn 'Arabi
Tarjuman al-Ashwaq
Translated by R.A.Nicholson

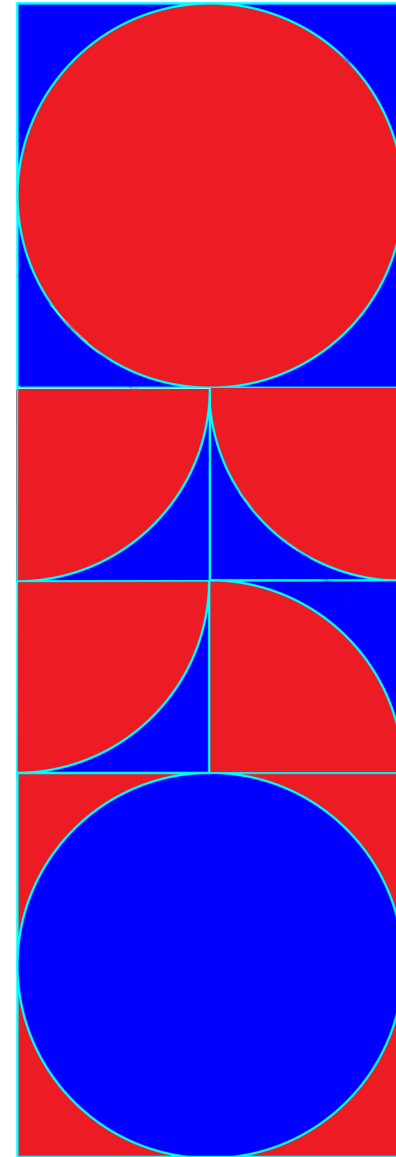
These events are sponsored
by the Beshara Trust.
To find out more about the work
of the Trust, about The Beshara
School at Chisholme House in
the Scottish Borders and Beshara
groups around the world, visit
www.beshara.org

The Beshara School at Chisholme
House has offered courses and
volunteering opportunities since
1973. The premise of the education
is the unity of being. Courses
are composed of four basic
elements: group study and
conversation, meditation, mindful
work and devotional practice.

For more information
email: secretary@beshara.org
Tel: +44 (0)1450 880 215
or write to: The Secretary, Beshara
School, Chisholme House, Robertson,
Hawick, Scottish Borders, TD9 7PH.
*The Beshara School has been BAC
accredited since 2009.*



BESHARA BRISTOL

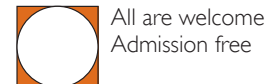


**Autumn
2013**

Afternoon
Discussion
Groups

**EXPLORING
WHAT IT MEANS
TO BE HUMAN
FROM THE
PERSPECTIVE
OF THE UNITY
OF BEING**

**HAMILTON HOUSE
80 STOKES CROFT
BRISTOL BS1 3QY**



www.beshara.org



Welcome to a series of Saturday afternoon talks followed by discussion, exploring what it means to be human from the perspective of the unity of being



Muhyiddin Ibn 'Arabi and Jalaluddin Rumi were 13th century Sufi spiritual teachers. They both left a legacy of extraordinary writings which are studied today because they contain eternal truths that are immediately relevant, outside of time, geographical or religious boundaries.

All sessions 2-5pm

**HAMILTON HOUSE
80 STOKES CROFT
BRISTOL BS1 3QY**

All are welcome
Admission free
Suggested donation £5

To register interest in attending these discussions, and to join the Bristol Beshara mailing list contact: bristolbeshara@outlook.com

Sat 28 September 2013

Rumi in the present: is Rumi a benchmark for contemporary spirituality?

Led by Peter Yiangou

Peter has been involved in most aspects of Beshara over the last 40 years, from organisation and strategy to the development and running of courses in the UK and abroad. He is also senior partner of an award-winning architectural practice in the Cotswolds. He has a particular interest in the evolution of spiritual education, its practical relevance and how it addresses the post-modern mind. His presentation will look at essential aspects of Rumi's teaching, and especially how they have been embraced in contemporary spirituality.

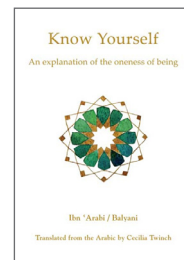
Sat 19 October 2013

Know yourself

An introduction to Ibn 'Arabi's thought

Led by Cecilia Twinch

Ibn 'Arabi speaks to all who long to go beyond their limited self in order to discover their true nature. This kind of knowledge is motivated by love, the love to be known and to express ourselves fully. 'When the secret of an atom is discovered, the secret of all created things is made clear.'



Cecilia will explore the concept and experience of self knowledge according to Ibn 'Arabi, using quotations and stories from his works, including her new translation from the Arabic of *Know Yourself: An explanation of the oneness of being* (Beshara Publications, 2011). She is a Senior

Research Fellow of the Muhyiddin Ibn 'Arabi Society and has worked as a teacher, translator and editor. Her publications also include an English translation of one of Ibn 'Arabi's earliest works, *Contemplation of the Holy Mysteries* (Anqa Publishing, 2001).

Sat 9 November 2013

Ibn 'Arabi on human happiness

Led by Jane Clark

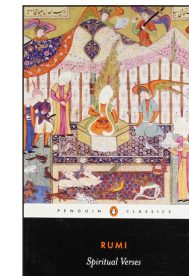
Jane will explore how the perspective of a great spiritual master like Ibn 'Arabi can contribute to the current debate on happiness. She is a Senior Research Fellow of the Muhyiddin Ibn 'Arabi Society, and is involved in research and translation of Ibn 'Arabi's work. Jane has lectured in the UK and internationally on the relevance of Ibn 'Arabi's ideas in the contemporary context. She works as a Support Tutor with students at the University of Oxford.

Sat 30 November 2013

The Vision of Rumi's Masnavi: seeing and knowing

Led by Alan Williams

This session will be based on Alan's translation of the first book of Rumi's *Masnavi*, entitled *Spiritual Verses* (Penguin Classics, 2006) and his forthcoming book *The Vision of Rumi* (I.B.Taurus, 2014), which attempts to help the careful reader of the *Masnavi* to understand the particular vision of mystical union that it imparts.



Alan is Professor of Iranian Studies and Comparative Religion at The University of Manchester and is British Academy Wolfson Research Professor 2013-16 to complete his translation of all six books of the *Masnavi*.

These workshops are sponsored by the Beshara Trust, which was established as an educational charity in 1971 with the purpose of the advancement of education in the consideration of the basic unity of all religions. (Registered charity nos. 296769 England and Wales, SC039933 Scotland.)